

The background features a light grey gradient. On the left, there are several geometric shapes: a grey rectangle at the top left, a grey semi-circle to its right, a grey vertical rectangle below the top-left rectangle, an orange vertical rectangle to its right, a grey semi-circle to the right of the orange rectangle, a large orange semi-circle at the bottom left, and a grey vertical rectangle to its right.

PDP GROUP LTD

PDP GROUP LIMITED
RYEBROOK STUDIOS
WOODCOTE SIDE
EPSOM
SURREY KT18 7HD
01372 744446



+ **PDP** is a multi-disciplinary team of Architects, Quantity Surveyors, Interior Designers and CDM Co-ordinators.

In practice for over 30 years, we have developed an excellent reputation for quality design, attention to detail and commercial awareness, enabling us to maintain long term relationships with our clients.

Our approach to a project is based on close collaboration with our clients, other consultants and disciplines in-house, to achieve maximum benefit from individual skills. Every project is managed by a senior and experienced member of our team, fully supported by a director, from inception to completion.

+ **Continuity:** At PDP we are proud of the continuity of service that we have provided numerous clients. Our readiness to support owners and occupiers is a reflection of our philosophy to foster long - term relationships

+ **Premises:** Ryebrook Studios at Woodcote Side in Epsom were converted from a former factory by PDP in 1990. The open plan layout of the building provides an ideal working environment, enhancing communication between directors, senior and junior team members.



architecture

PDP Architects

+ **PDP** has completed a significant volume of diverse buildings. These include prestigious office headquarters with a range of bespoke accommodation (kitchens, restaurants, computer centres and gymnasias); leisure facilities; retail premises; school accommodation; care facilities; hotels; aviation based premises; residential; retail; industrial warehousing; motor dealerships and Training Academy facilities for premier league football clubs. Projects range from new-build in green field locations to conversion and refurbishment of listed buildings in urban settings.

+ **Feasibility and Planning:** The practice advises clients from initial project inception through all stages of site acquisition, design and construction to fitting out completed projects and assisting in managing staff relocation. We undertake feasibility works ranging from a simple overview on development potential through to master planning of large sites. Our depth of practical experience in planning negotiations enable us to anticipate when specialist support may be required and to work closely with relevant disciplines to satisfy today's rigorous requirements.

+ **Research and Design:** Analysis of client's requirements and an awareness of project opportunities allows us to form, adapt and develop a brief to maximum advantage. We seek to produce solutions based upon established criteria with technical input from the client, end users, all members of the design team and specialists in an endeavour to realise aesthetically pleasing, practical and flexible solutions.

+ **Project Implementation and Management:** The success of any project requires a considered and effective managed process throughout all stages. The clear identification of objectives and the close monitoring of the evolving process is an integral part of the administrative role of the lead designer. We aim to deliver exciting successful results within the constraints of cost and time.

+ **Cost Management and Health & Safety:** The practice provides through our experience and in-house expertise advise on project budgets, cost planning and evaluations in addition to CDM, Health and Safety management and strategy plans.



quantity surveyors

PDP Quantity Surveyors

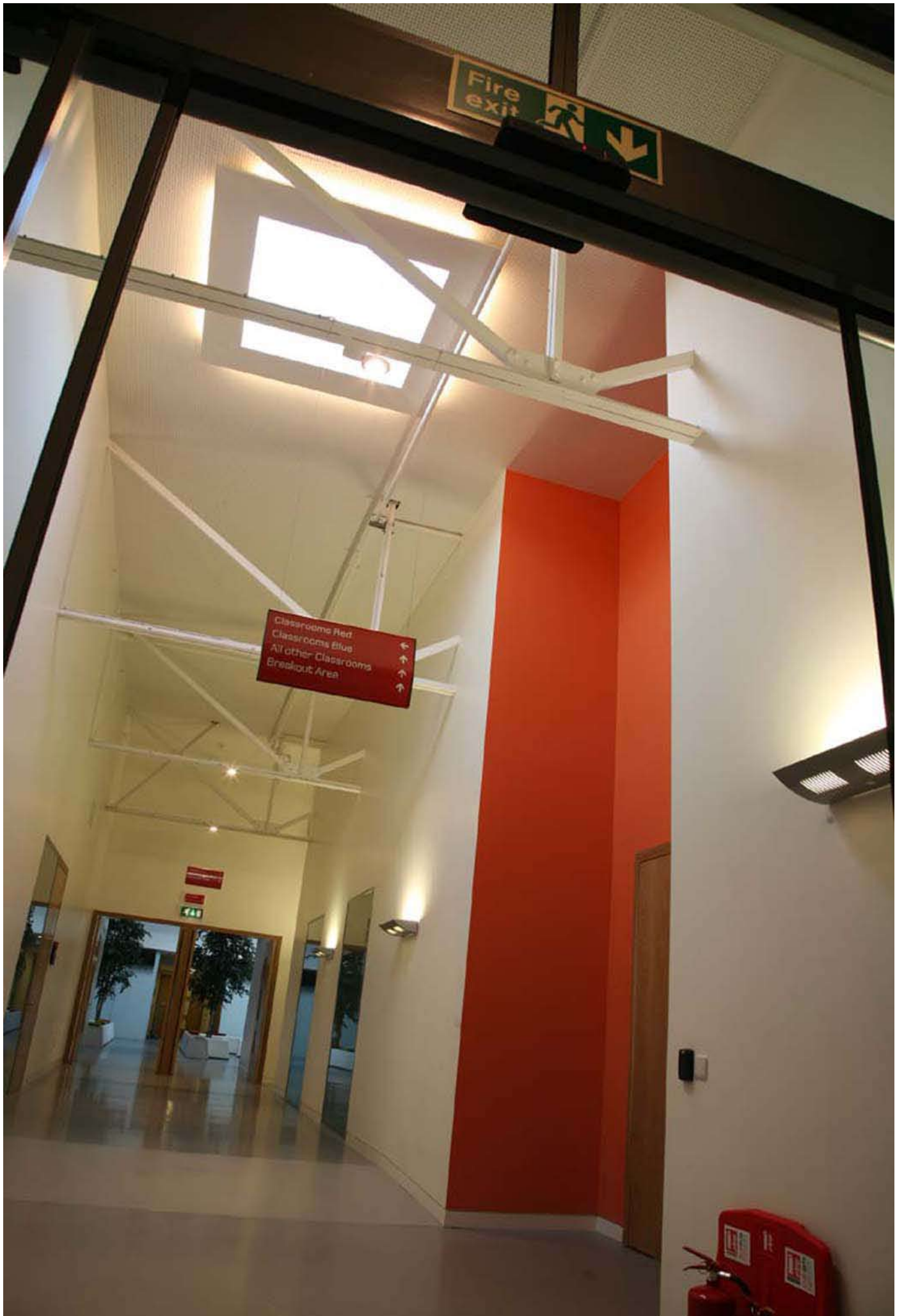
+ **PDP Quantity Surveyors** are successfully involved in a significant volume of diverse building types. These include prestigious office headquarters; leisure facilities; retail premises; school accommodation; laboratories; hotels; residential; retail; industrial warehousing; motor dealerships and aviation based premises. Projects range from new-build in green field locations to conversion and refurbishment. The practice offers Clients a diverse range of expertise at all project stages from initial budget advice, through production and management of Tender documents and cost control through to project completion. Our complimentary skills as Employers Agents and Project Co-ordinators enable us to offer each client a professional service tailored to their requirements.

+ **Feasibility and Project Implementation:** The practice has a depth of practical experience of commercial and residential developments and so can offer Clients project viability and compliance assessment and cost advice from initial project inception through all stages of site acquisition; design and construction to fitting out of completed projects and management of staff relocation.

+ **Value Engineering:** Analysis of the Client's requirements and constant monitoring of the developing design and programme allows us to provide and update cost plans as a value engineering tool to assist in achieving the required development in the most economic manner.

+ **Tendering:** The production of thorough and accurate tender documentation enables us to constantly monitor project costs during the construction stage and to offer cost advice to keep the project within its financial target.

+ **Management:** In addition to cost management we are able to offer our experience and expertise as Employer's Agent within the Design and Build contract and as overall Project Co-ordinators.



interior design

PDP Interior Design

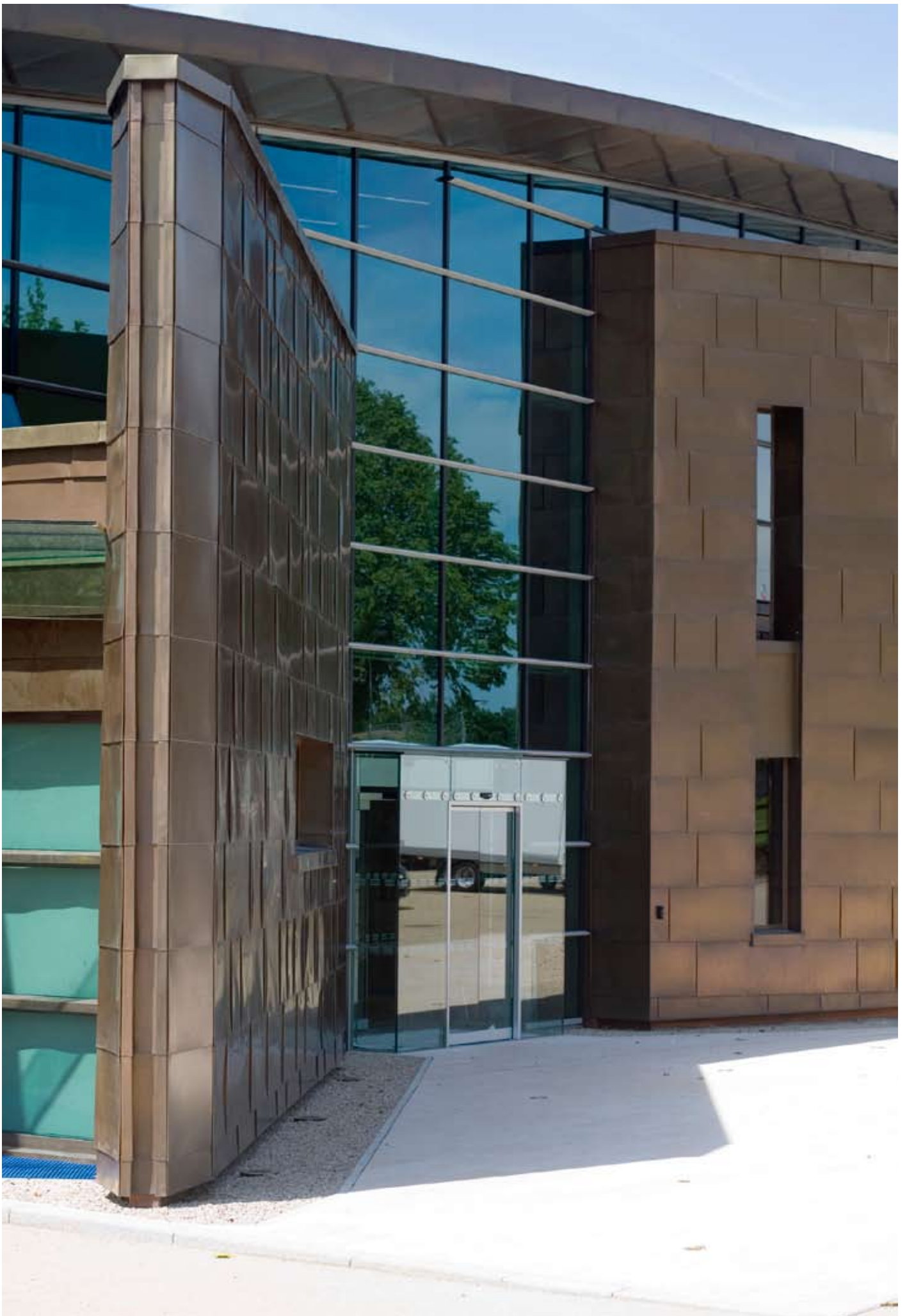
+ **PDP Interior Design** uses an original creative ability with the objective to enhance clients operating performance and growth through greater usability, aesthetics and customer experience. The practice has completed a significant volume of diverse interiors including prestigious office headquarters with a range of bespoke accommodation (kitchens, restaurants, computer centres and gymnasias); reception areas; leisure facilities; retail premises; care facilities; school accommodation; hotels; residential; motor dealerships & aviation based premises. Projects range from new-build to conversion and refurbishment of listed buildings in urban settings.

+ **Research:** Analysis of client's requirements and an awareness of project opportunities allows us to form, adapt and develop a brief to maximum advantage. We seek to produce innovative solutions based upon established criteria with technical input from the client, end users, all members of the design team and specialists in an endeavour to realise aesthetically pleasing, practical and flexible solutions.

+ **Concepts and Design:** The practice produces detailed Interior Branding Concepts to simple redecorations and from substantial structural remodelling to basic space planning proposals. Advise to clients from initial project inception through all stages of site acquisition, concept design and construction to fitting out completed projects and assisting in managing staff relocation.

+ **Project Implementation and Management:** The success of any project requires a considered and effective managed process throughout all stages. The clear identification of objectives and the close monitoring of the evolving process is an integral part of the administrative role of the lead designer. We aim to deliver exciting successful results within the constraints of cost and time.

+ **Cost Management and Health & Safety:** The practice provides through our experience and in-house expertise advise on project budgets, cost planning and evaluations in addition to CDM, Health and Safety management and strategy plans.



+ **PDP Project Safety** has since its incorporation in 1995, established a reputation for a proactive, pragmatic common sense approach to the Construction (Design & Management) Regulations.

As corporate members of the Association for Project Safety the company has successfully completed a wide variety of project throughout the commercial, retail and healthcare sectors.

+ **Our Mission** is to continually increase the value of each development through proactive management of the health and safety aspects of the design, through the construction process and maintenance life cycle up to and including final demolition of the building. In particular, emphasis is placed upon safe methods of working, reduced development risk and lower whole-life costs through ease of maintenance, in order to achieve greater development value.

+ **Services:** In order to achieve these aims the company has developed services that extend beyond the basic requirements of the CDM Regulations including, construction health & safety management, workplace health & safety management and seminars.

+ **Support:** Our most important resource is the competence and commitment of our staff and our close collaboration with other disciplines in house.

This resource is additionally supplemented through associated companies providing specialist support on matters such as asbestos surveys and removal, disability audits, contamination and environmental audits and services surveys.

clients

PDP Group Ltd

Aberdour School Educational Trust + Adonis Construction Limited + Allied Domecq + Amberley House Developments Ltd + Anglo Lamron Limited + Anglo St James Plc + Anvil Estates Limited + Argyll Stores + Arundell House Securities + Auger Homes + Averley Wood Properties Limited + Audi U.K. + AXA Sun Life + Bardgrove Property Services Limited + Berwick Hill Properties + Bilsdale Properties Limited + Blenheim House Construction Limited + Blenheim Land + Bluebrook homes + Blueprint Estates plc + Bluevale Limited + BP Pension Fund + Brahma Kumaris + Breeze Volkswagen + Bridome Limited + British Airports Authority + C.A.B.I. + Cala Properties Limited + Cantium Developments + Chalk Lane Hotel + Charlton Athletic Football Club + Chelsea Village plc + Childline + The Children's Trust + Citicourt Investment Partners + Claremont Homes + Clarke Nickolls & Coombs PLC + Clayform Properties Limited + Clerical Medical Managed Funds Limited + CMS Limited + Courts PLC + C P Hillier Parker + The Crown Estates + Deacon Industrial Projects + DeLouis Medical + Denvale + Diamante Investments + Dialect Investments + Drewatt Neate + Drivers Jonas + Durngate Commercial (Developments) Limited + EDS + Enfranchise 302 Limited + English & Overseas Properties Limited + The Equitable Life Assurance Society + Ethos Construction Services Ltd + Eurobet + Excelsor Project Management + Fenchurch Estates Limited + Fishron Developments + Fruition Homes Limited + Fuller Peiser + Gala Coral + Gladding Estates & Development PLC + Gladedale Homes Limited + Golden Tulip + Gresham House Plc + Grosvenor Square Developments Limited + Guava International Limited + Hanbidge + Hanford Investments Limited + Havensilver + Helical Bar Developments + Hermes Property Asset Management Limited + Hill Samuel Property Services Limited + Holmes + Holroyd Pensions + House of Fisher Limited + Hulley & Kirkwood + Hutley (Egham) Limited + Imperial College + Inchcape UK + Inyesco Real Estate + I.R.I. Developments + 3i Commercial Properties Limited + Isis Commercial Properties Limited + Isle of Wight Healthcare NHS Trust + Kier Southern + Kilmartin Properties (TK) Limited + Kodak Pension Fund + Kyle Stewart Properties + Laing Properties (U.K.) Limited + Lamron Estates Limited + LaSalle Investment Management + Laxmanbhai Construction UK Limited + Legal and General + London and Southampton Contractors + London Village Limited + Loxleys (Jaguar) Limited + Marcon Buildings & Services Limited + Mansell Construction and Services Limited + Masonbrook Limited + Mayfair Edition + Mercury Property Development Fund + Meridian Business Development Consultants + Midland Chilled Food + Mildren Construction + Mitre Property Management + New Capital Properties Limited + Newplan Properties Limited + NHS South West London Support Services Partnerships + Normand Limited + Oracle Estates + Palace Gate Investments Limited + Palace Yard Limited + PAT Pensions Ltd + Pegasus Commercial Developments Pension Fund Securities + Pentstone PLC + PIH + Primark + Prudential Commercial Property Services + Prudential Portfolio Managers + Racal Properties + Rope-maker Properties Limited + Royal Mail Pension + St Christopher's School Trust (Epsom) Limited + St George's Securities + Safeway PLC + St. Modwens + J Sainsbury Developments Limited + Scarborough & Edinburgh Property Co. Limited + Schroder Properties Limited + Shaftesbury Housing Group + Shorevale Limited + The Silverdale Group Ltd + Spirent plc + Standard Life Investments Limited + Summer Court Limited + Sun Life Properties Limited + Surrey County Council + T A Fisher and Sons Limited + TBD Holdings + Talbot Design Limited + Tarmac Properties Limited + Teesland Developments Teesran Limited + Texas Homecare + Total Project Integration + Tower Gate Partnership Limited + TT Tents + T & T Tubecraft Limited + Unilever Plc + Vanson Developments Limited + Virgin Atlantic Airways Limited + Virgin Holidays + Volkswagen Financial Services Limited + Volkswagen Group United Kingdom Limited + Wandsworth Teaching Primary Care Trust + Westbrook Property Developments Limited + Whitehouse Homes + Whites + Winzer Wuth Industrial Limited + Wishmore Cross School + WRC plc (Water Research Council)

Malcolm Bender RIBA Dip Arch

Malcolm joined PDP in 1977 and became a partner in 1986. He has been responsible for major commercial developments including fully fitted-out headquarters for Nortel, in Maidenhead and the fitting-out of Virgin Atlantic Airways Headquarters in Crawley. Current projects include airside work at Heathrow Airport and managing Virgin Atlantic's constantly evolving requirements.

malcolm.bender@pdp.co.uk

Barry Brown MRICS

Barry joined PDP in 1978 and became Principal Surveyor responsible for the Quantity Surveying discipline in 1985. Barry became a partner in 1986. He has wide experience in industrial, hi-tech, commercial office and retail, Local Authority housing and schools, research laboratories and West End office refurbishment.

barry.brown@pdp.co.uk

Doug Dabell atp ARCH

Doug joined PDP in 1981, was made an Associate in 1988 and became a partner in 1998. He has been responsible for a team concentrating on retail, warehousing, motor dealerships and a variety of industrial projects. He has been responsible for design and fitting out of more than 20 stores for Courts Plc and numerous motor retail facilities for the Volkswagen Group.

doug.dabell@pdp.co.uk

Colin Lott BA (Hons) Dip Arch RIBA

Colin joined PDP in 1981. He was made an Associate in 1988 and became a partner in 1998. His principal role has been as team leader for a succession of office developments ranging from c. £2 million to £26 million including fully fitted-out headquarters for Elsevier Science in Oxford and Virgin Atlantic Airways in Crawley.

colin.lott@pdp.co.uk

Glynnis Grossmith

Glynnis joined PDP in 1995 as the Office Manager and became a director in 2007. Her proven supervisory and management skills together with her solid financial background leaves her responsible for administration matters within the company.

glynnis.grossmith@pdp.co.uk

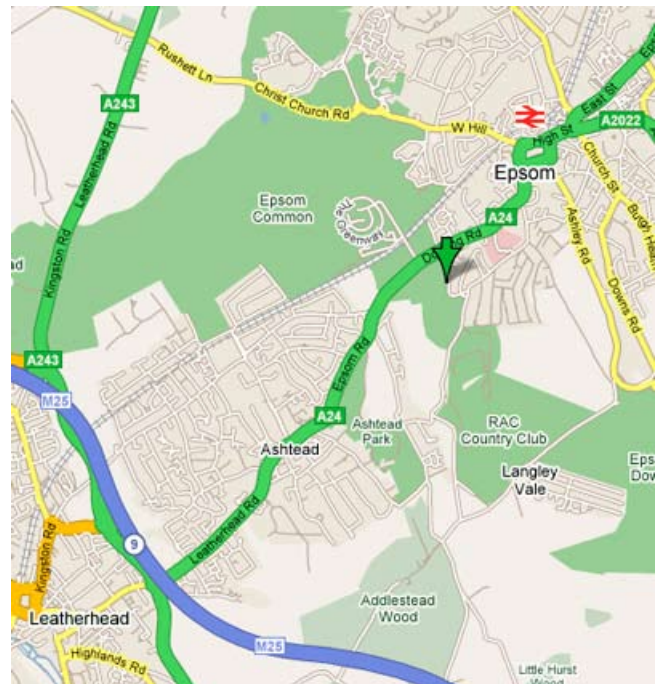
directions

PDP Group Limited

Directions: Ryebrook Studios are located in Woodcote Side, which is off the A24, approximately 1.5 km south of Epsom town. Epsom station is served by regular train services from Victoria and Waterloo, and has a black taxi rank.

From the M25: Exit at junction 9 and follow signs for the A24 to Epsom. You will first pass through Ashtead village and then, after approximately 2.5 km, the road rises. Going over the crest of the hill, Woodcote Side is immediately on the right, signposted to 'Langley Vale'. Ryebrook Studios are located a few hundred metres down on the right.

From Epsom: Follow signs for the A24 to Dorking. After passing Epsom Hospital on the left, the road rises. Woodcote Side is the last road on left before the crest of the hill and is signposted to 'Langley Vale'. Ryebrook Studios are located a few hundred metres down on the right.



PDP Group LTD

Ryebrook Studios, Woodcote Side,
Epsom, Surrey, KT18 7HD
Tel: 01372 744446
Fax: 01372 745597
www.pdp.co.uk

